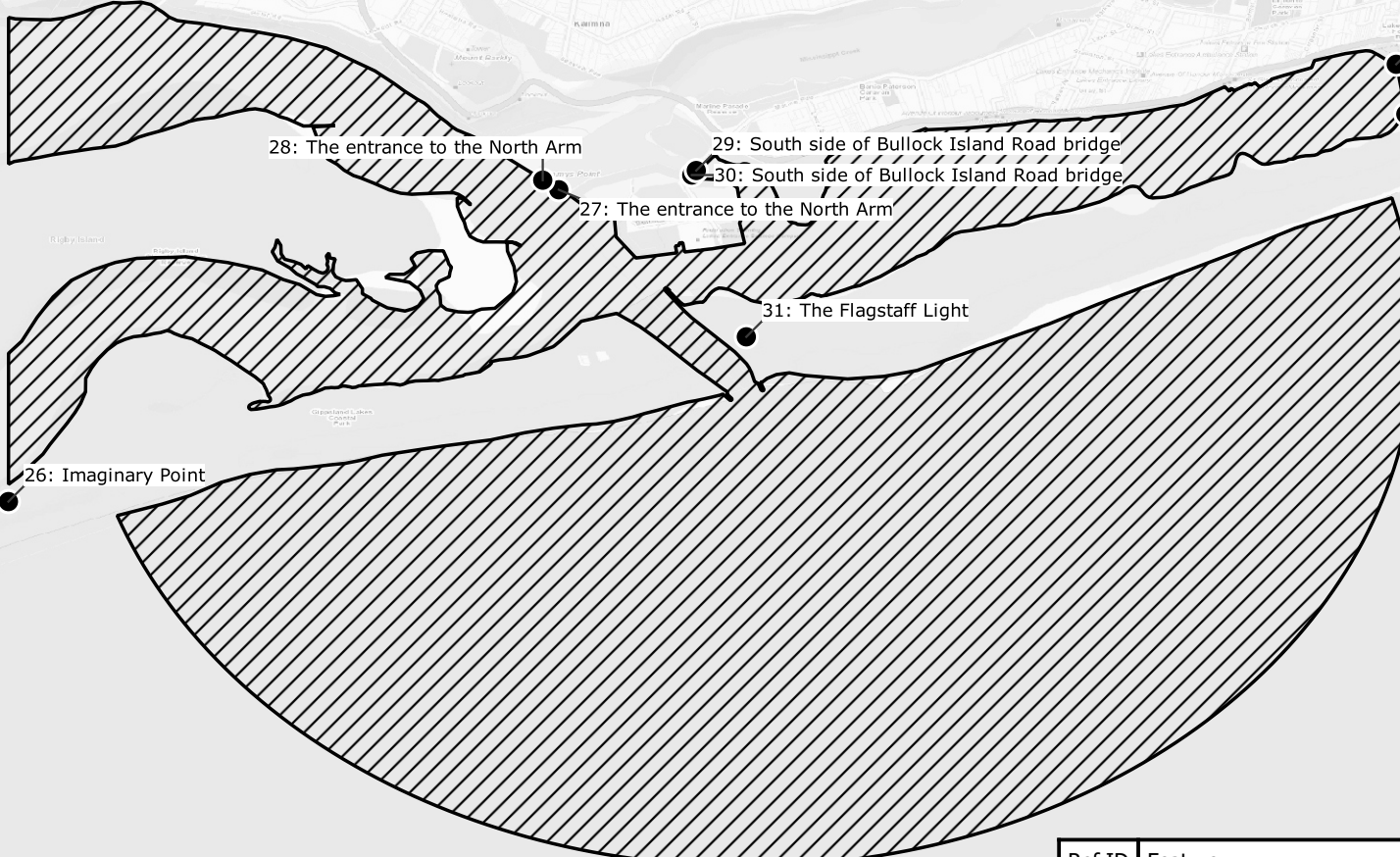


Local Knowledge Area Code

 LK8

25: Imaginary Point



32: Cunninghame Arm footbridge



33: Cunninghame Arm footbridge



28: The entrance to the North Arm



29: South side of Bullock Island Road bridge



30: South side of Bullock Island Road bridge



27: The entrance to the North Arm



31: The Flagstaff Light



26: Imaginary Point



Ref ID	Feature	Latitude	Longitude
25	Imaginary Point	37° 52.585' S	147° 57.000' E
26	Imaginary Point	37° 53.627' S	147° 57.000' E
27	The entrance to the North Arm	37° 53.038' S	147° 58.040' E
28	The entrance to the North Arm	37° 53.020' S	147° 58.009' E
29	South side of Bullock Island Road bridge	37° 53.001' S	147° 58.300' E
30	South side of Bullock Island Road bridge	37° 53.010' S	147° 58.291' E
31	The Flagstaff Light	37° 53.316' S	147° 58.394' E
32	Cunninghame Arm footbridge	37° 52.801' S	147° 59.622' E
33	Cunninghame Arm footbridge	37° 52.895' S	147° 59.640' E



0 0.2 0.4 km



BASS STRAIT